

MONTHLY MEMBERSHIP PROGRESS REPORT

LOCATION ARKANSAS

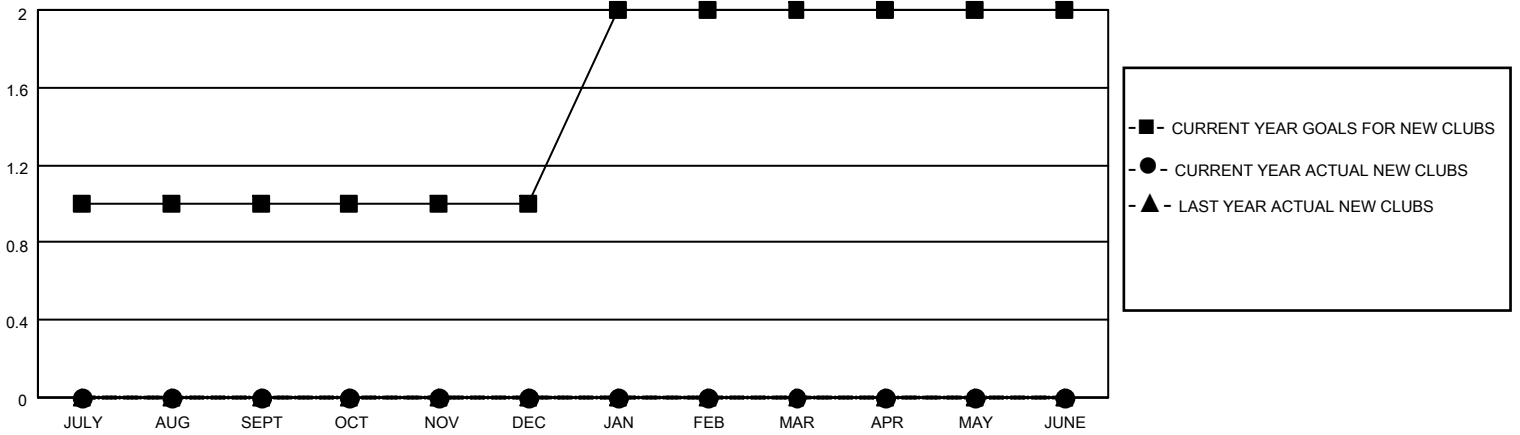
District 7 O

Results as of: 4/30/2022

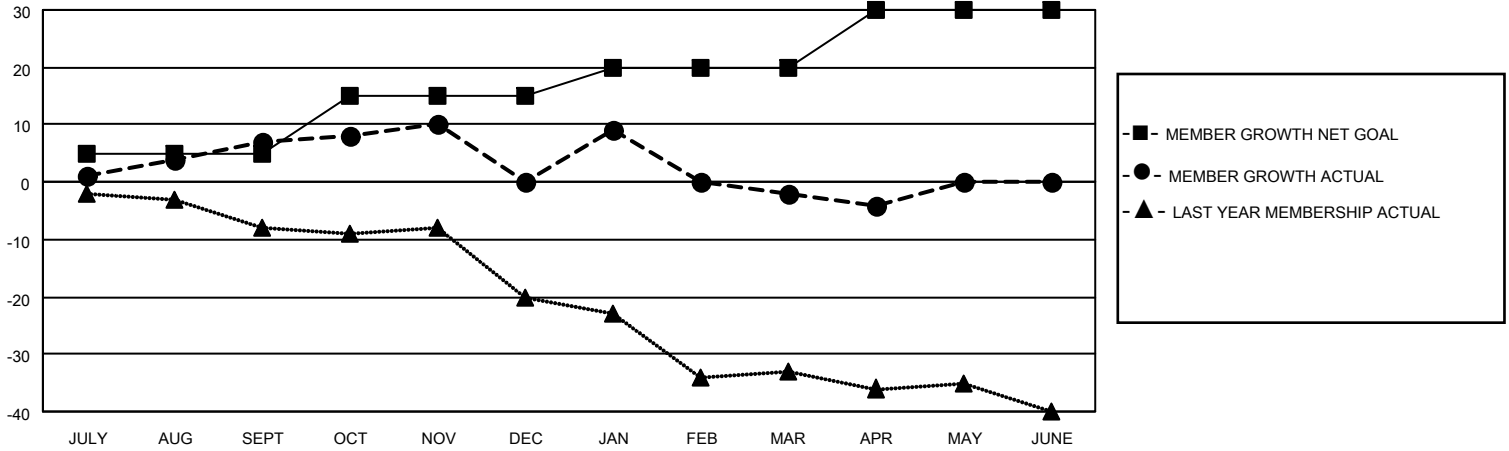
Clubs			
RESULTS FOR 2021-2022			
QUARTER	NEW CLUB GOAL	NEW CLUBS	DROPPED CLUBS
JULY/AUG/SEPT	1	0	0
OCT/NOV/DEC	0	0	0
JAN/FEB/MAR	1	0	0
APR/MAY/JUNE	0	0	0

Members			
RESULTS FOR 2021-2022			
QUARTER	MEMBER GROWTH NET GOAL	MEMBER GROWTH ACTUAL	DROPPED MEMBERS ACTUAL (including transfers)
JULY/AUG/SEPT	5	19	10
OCT/NOV/DEC	10	8	15
JAN/FEB/MAR	5	13	15
APR/MAY/JUNE	10	2	4

GOALS AND ACTUAL NEW CLUBS CUMULATIVE



GOALS AND ACTUAL MEMBERS CUMULATIVE



DROPPED CLUBS: 0	
DROPPED MEMBERS	
DECEASED	11
CLUB CANCELLED	0
OTHER	33
TOTAL	44

14 CLUBS OF 26 ADDED 1 OR MORE NEW MEMBERS

[CLICK HERE FOR CUMULATIVE MEMBERSHIP DATA](#)

<u>GENDER DISTRIBUTION</u>	
MALE	363 (64.13%)
FEMALE	203 (35.87%)
NON BINARY	0 (0.00%)
PREFER NOT TO ANSWER	0 (0.00%)
TOTAL FAMILY UNIT MEMBERS	
	109
FAMILY MEMBERS PAYING HALF DUES	
	56